



Using Your Own Camera

Table of Contents

Pre-Setup information	2
Startup Instructions.....	2
Setup Instructions	3
Startup & Alignment Instruction	4

Pre-Setup information

The ViewScan comes with an attached boom-camera for Pro/Premium levels. A user can use their own camera, but they will not have the boom-arm attachment which extends off the monolith.

Requirements:

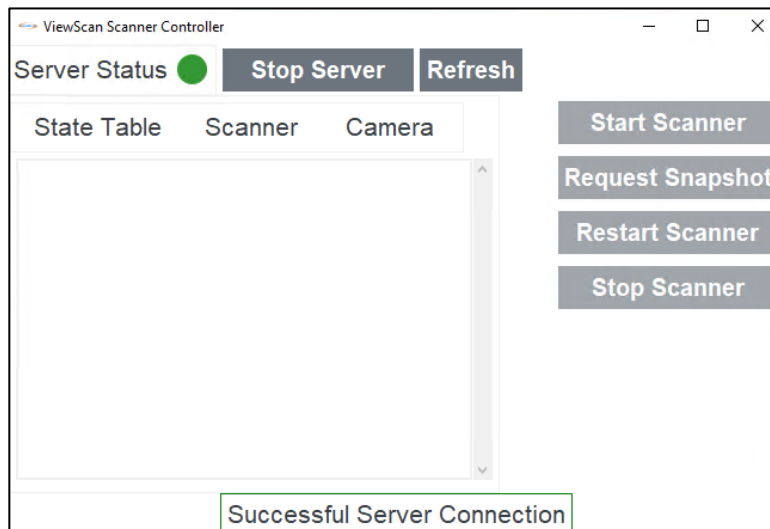
- A machine with ViewScan 2.0 installed.
- Access to both the Scanner & Camera on the network.
- Place to attach the camera with a clear view of the entire monolith.
- The RTSP stream link of the camera (with credentials if necessary).

Startup Instructions

1. Turn on the device and start the **ViewScan Controller** from the desktop.



2. When it opens wait for it to connect to the Server.
 - a. If a server connection is unsuccessful click **Start Server**. Allow the controller to make a connection while the server starts up.
3. Once connected it will change the server status icon to green.



4. We will need the system to be online for the next set of instructions.

Setup Instructions

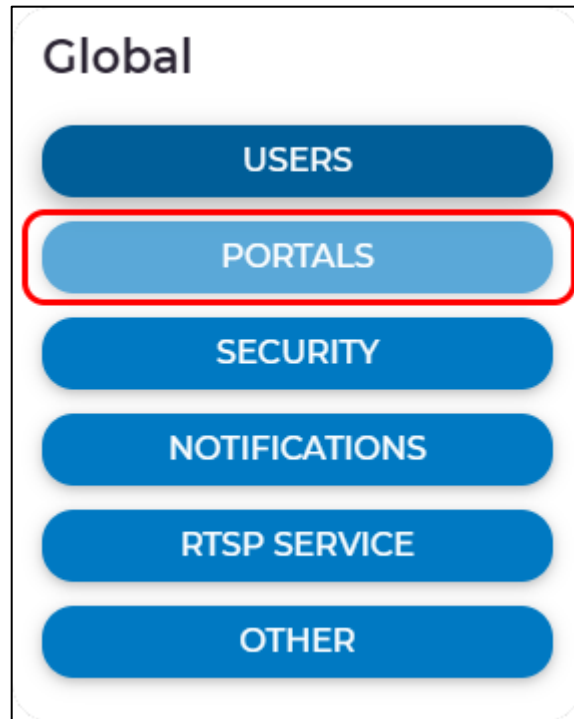
1. Install the camera in a designated location (ex: On a wall/ceiling) so that it faces the monolith and had a clear view of the monolith like that below.

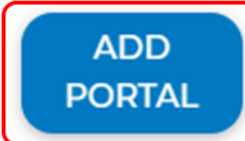

- It does not need to be attached to it like the boom-arm image below.
- It must be at or higher than the top of the monolith and at least 4ft away.
- The system can rotate the image if the camera is not oriented perpendicular.



2. Log into the **Web Portal** and visit the **Settings** page, then **Portals**, then click **Add Portal**.





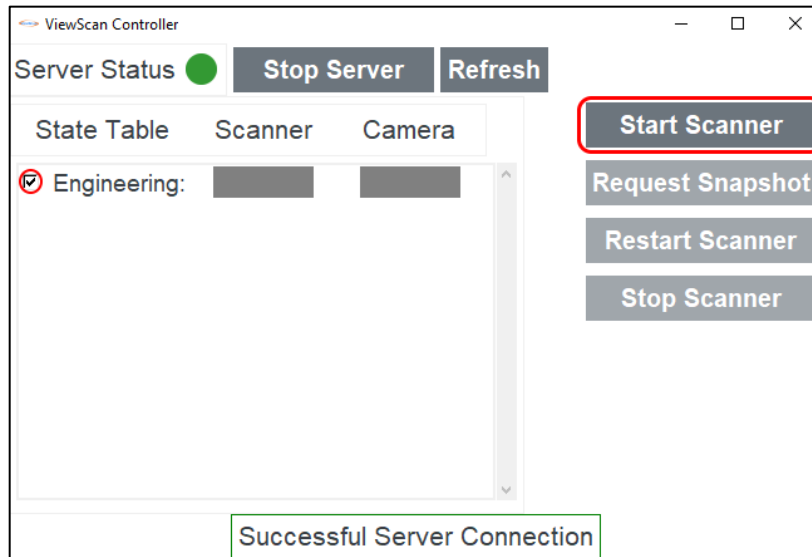
Arm Threshold	Actions	
35		

3. Fill in the Portal attributes. Switch **Attached Camera** to **On**, input the RTSP link into the bottom input, and then click **Confirm**.
 - The new Portal should now be visible in the **ViewScan Controller**.

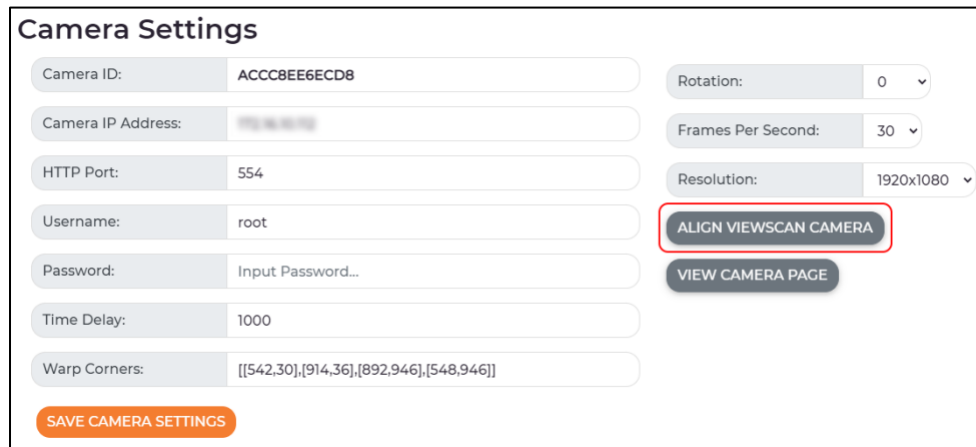
Startup & Alignment Instructions

With the new portal added, we now want to start up the system and align the camera.

1. Check that the Monolith & Camera is turned on and go to the **ViewScan Controller**.
2. Check the box next to the name of the Portal.
3. Click **Start Scanner**.
 - Allow the scanner to fully initialize until the status icons turn green.



4. Visit the Web Portal and click **Settings**, then **Camera**, then **Align ViewScan Camera**.



5. Click the following corners in this order:
- Top-Left inner corner
 - Top-Right inner corner
 - Bottom-Right stabilizing foot edge
 - Bottom-Left stabilizing foot edge



6. Click **Confirm Alignment**, then **Save Camera Settings**, and finally **Restart Scanner**.
7. Allow the Scanner to perform a quick Restart.
8. Either walk through the scanner or take a Snapshot from the **Monitor** or **Controller** to confirm the proper alignment of the warp rectangle.