



---

COMMAND INTEGRATION GUIDE



# *Contents*

<b>INTRODUCTION.....</b>	<b>2</b>
<b>HALO SMART SENSOR – ENABLE RTSP STREAM.....</b>	<b>3</b>
<b>COMMAND CONFIG TOOL – ADD HALO SMART SENSOR .....</b>	<b>4</b>
<b>COMMAND CLIENT – MONITOR HALO SMART SENSOR .....</b>	<b>7</b>

## INTRODUCTION

The HALO Smart Sensor can be integrated into March Networks COMMAND Video Management Software using the RTSP output from the HALO device and the Generic URL support of Command. This allows operators to visualize and record the real-time data from the HALO Smart Sensor, as though it were a typical IP Camera.

**Note: This integration was tested using COMMAND version 2.8.1.136 and HALO Smart Sensor firmware 2.2**

## HALO SMART SENSOR – ENABLE RTSP STREAM

To capture the Stream URL needed to connect ACS to HALO, simply navigate to the HALO Smart Sensor with a Web Browser, and click on the **Image Icon** in the bottom navigation bar



Scroll down to the RTSP settings.

### RTSP

rtsp://10.1.7.191:554/stream

RTSP Stream Enabled

Authentication Both

User admin

Password

Image Graph

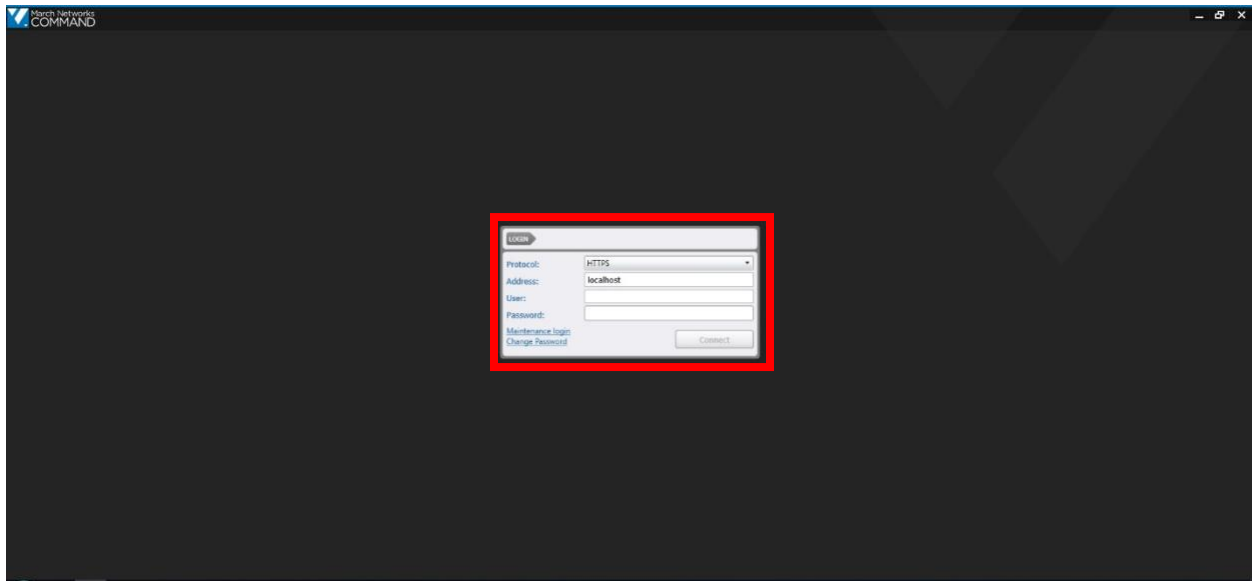
Port 554

Save

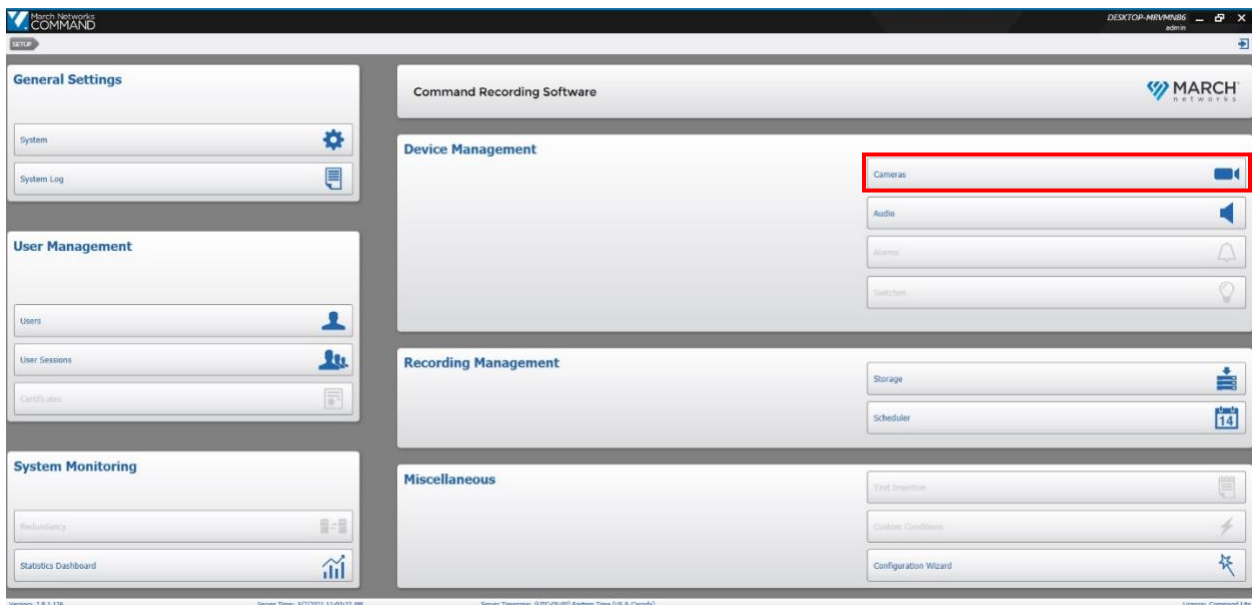
- 1) **Highlight** and **Copy** the **Stream URL** displayed at the top of the settings area.
- 2) Click the **RTSP Stream Enabled** switch
- 3) Set **Authentication** to **Both**
- 4) Enter a **Username** and **Password**
- 5) Select the **Image** Type (Dashboard or Graph)
- 6) Enter the RTSP **Port** (Default is 554)
- 7) Click **Save** to save RTSP Image Settings

## COMMAND CONFIG TOOL – ADD HALO SMART SENSOR

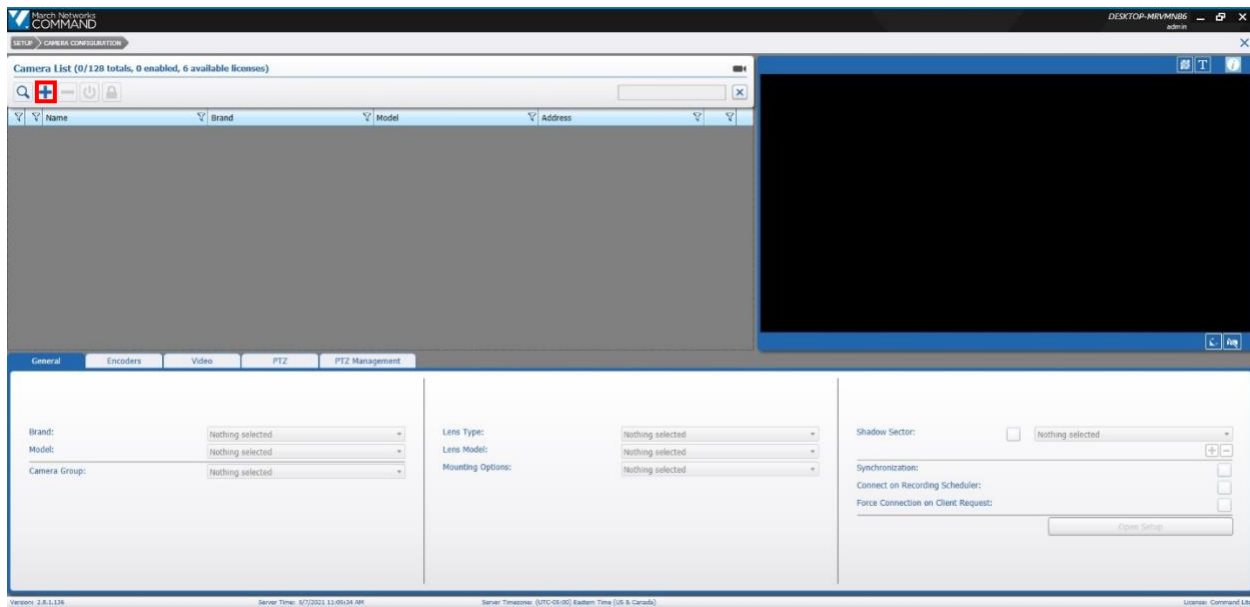
Open the **Command Config** tool to add the HALO Smart Sensor as a device.



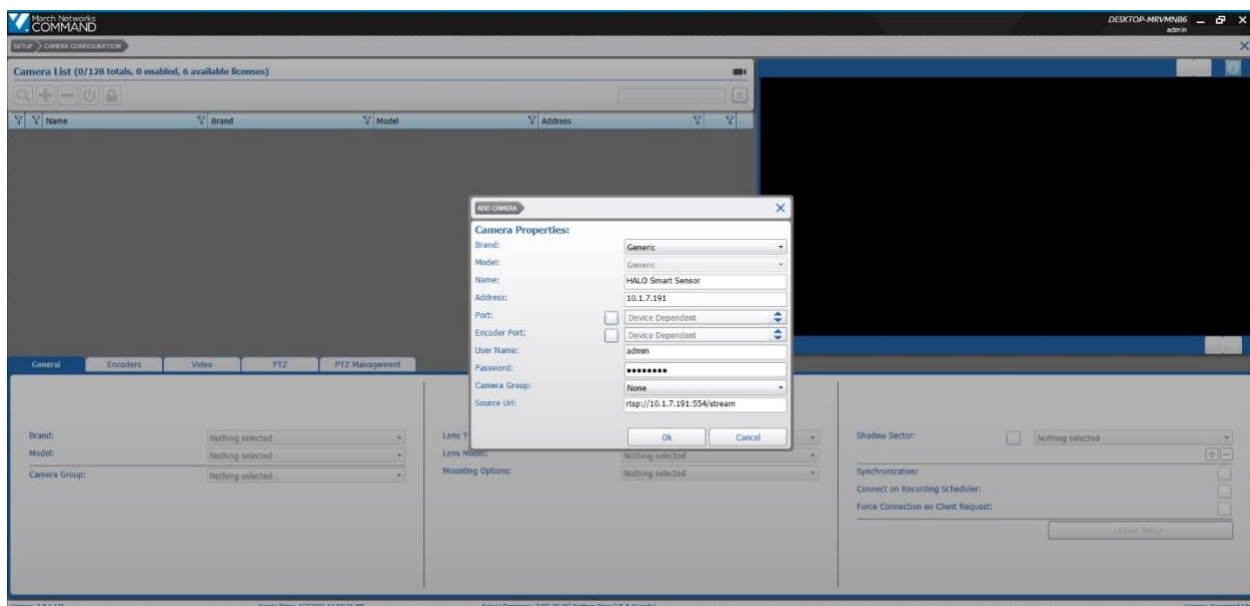
Enter **Username** and **Password** and click **Connect**.



On the Main Screen, click on the **Cameras** button.

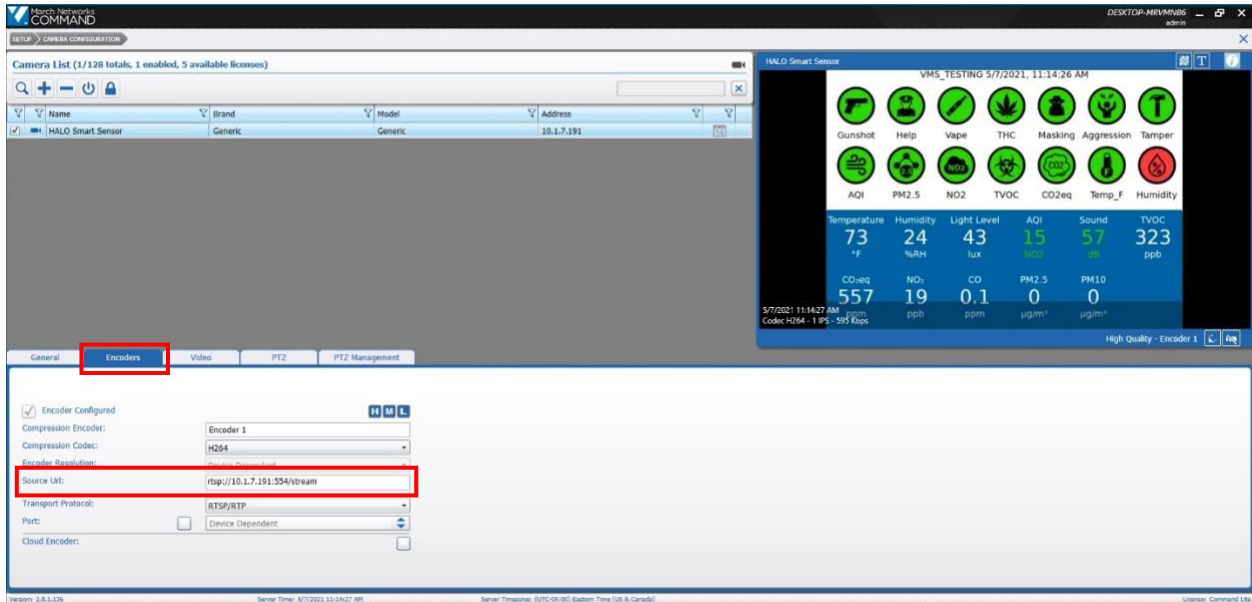


Click on the + Icon in the top left corner of the interface.



1. In the Camera Properties pop up window Select Generic from the Brand Dropdown Menu
2. Specify the **Name** of the HALO Smart Sensor device
3. Enter the IP Address of the HALO Smart Sensor in the **Address** field
4. Enter the HALO Smart Sensor Username in the Username field
5. Enter the HALO Smart Sensor Password in the Password field
6. Specify the HALO Smart Sensor RTSP URL in the Source URL field  
ex (rtsp://ipaddress:554/stream)
7. Click OK

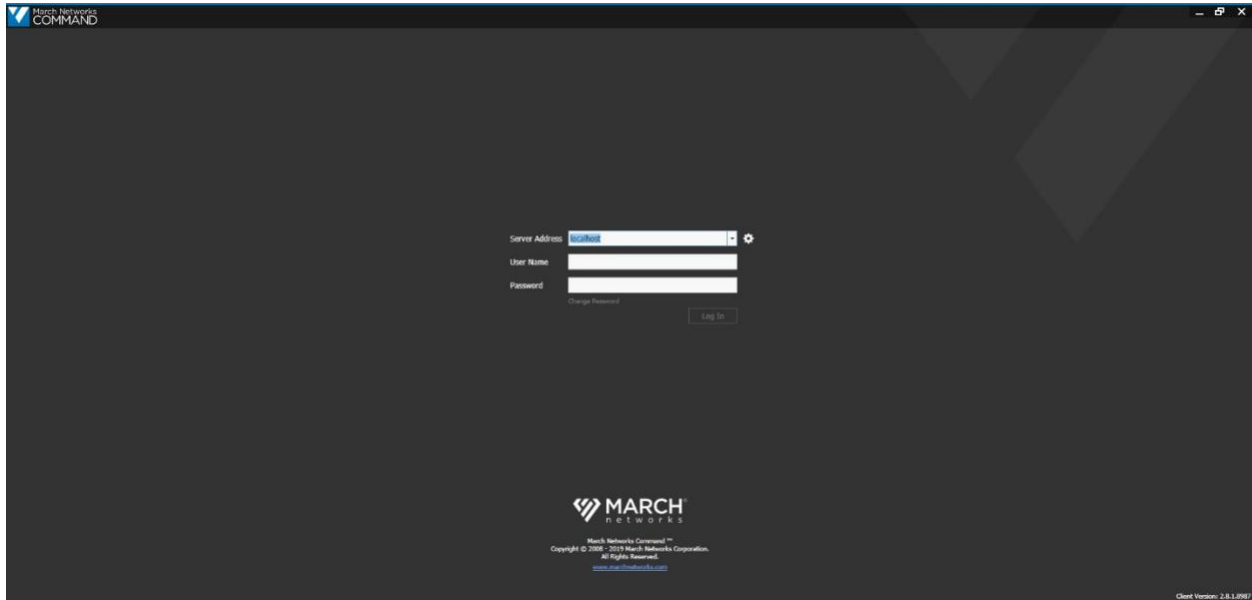
Click on the Encoders tab for the Selected Device and select H264 from the Compression Codec dropdown menu



Click SAVE to save the device settings. The device will connect and display in the sample window at the right.

# COMMAND CLIENT – MONITOR HALO SMART SENSOR

Open the COMMAND Client and login to visualize the HALO Smart Sensor.



Drag the HALO Smart Sensor from the System window into the Main Viewing area to begin monitoring activity on HALO Smart Sensor.

