

## **SentryVMS System Backup**

### **[Step 1]**

Navigate to “C:\Program Files\SENTRYVMS\Enterprise Service\SystemBackup” on the server where IPServer is installed.

Double Click “SystemBackup.exe” to launch Backup Wizard

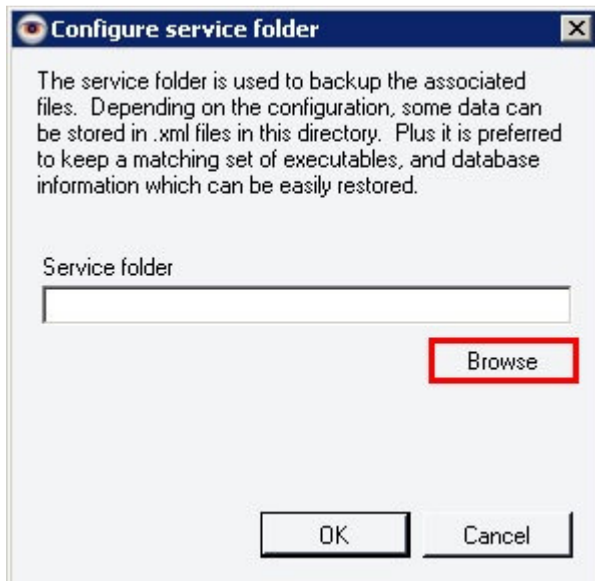
### **[Step 2]**

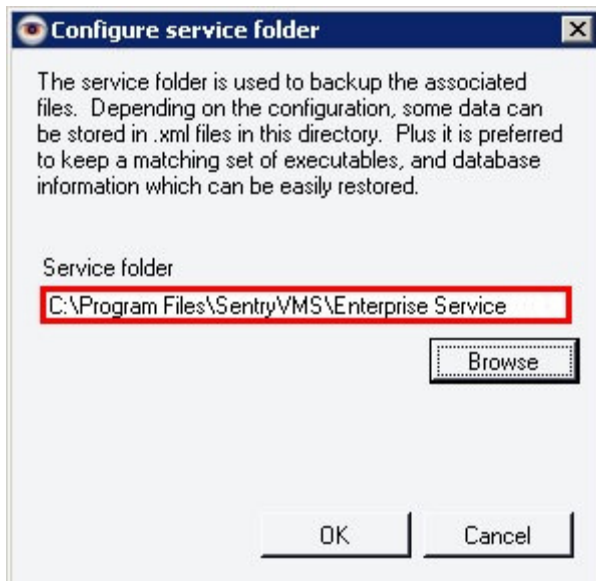
Click the first **Configure** Button to Set the Service Folder.



Click the **Browse** button and navigate to the “C:\Program Files\SENTRYVMS\Enterprise Service” folder.

Click **OK**.





Click **OK** to set the Service Folder path.

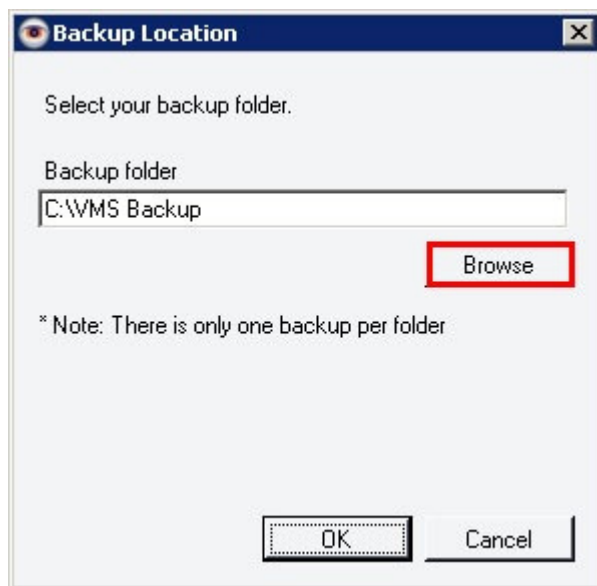
A green check will appear in the checkbox adjacent to Set service folder to signify that this task has been completed.

### [Step 3]

Click the second **Configure** button from the top to set the **Backup Folder**. This will be the folder where all of the files generated by the System Backup will be stored.



Click the **Browse** button to navigate to the folder to be used to backup your files and data.



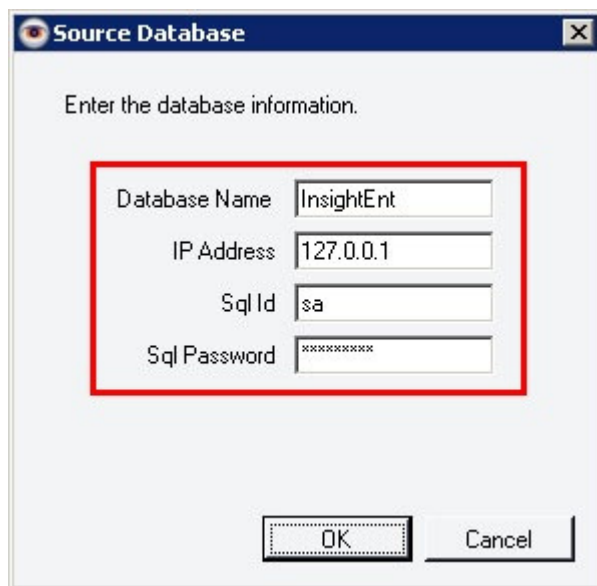
Click **OK** to set the Backup Folder.

#### [Step 4]



Once the Backup folder has been established, click the third **Configure** button from the top to set the database backup settings.

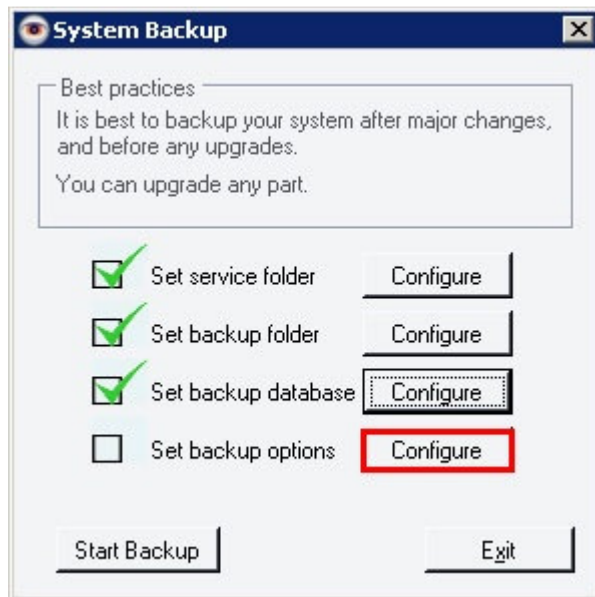
Enter the **Database Name**, **IP Address**, **SQL ID**, and **SQL Password** to connect to the database for backup.



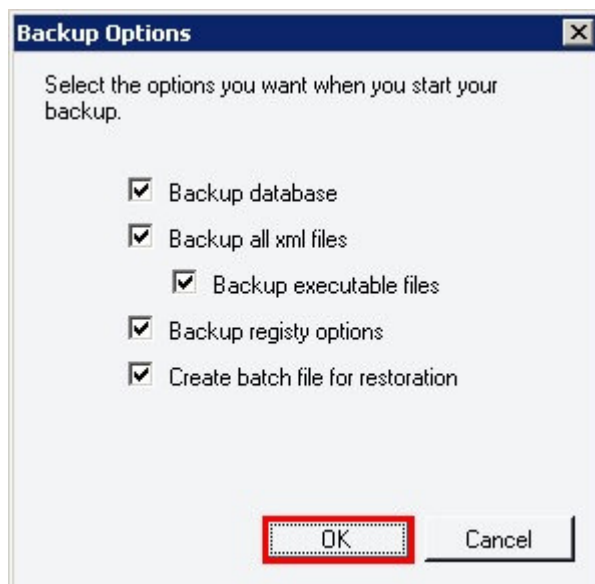
Click **OK** to set the Database Backup Information.

Once the OK button is clicked, a green check will appear in the checkbox adjacent to Set backup database to signify that this task has been completed.

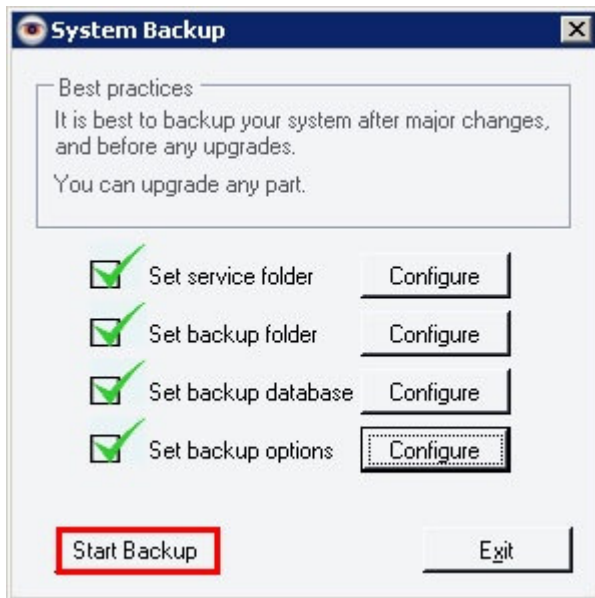
[Step 5]



Click the fourth **Configure** button from the top to set the backup options.

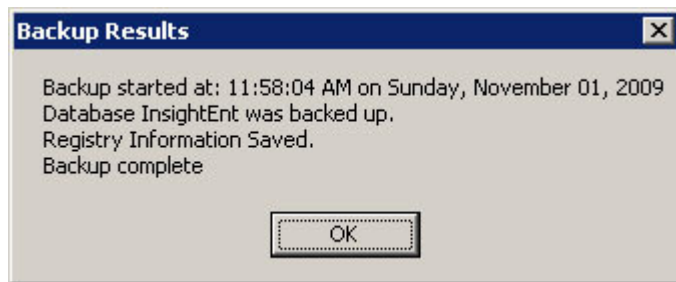


Check each of the separate checkboxes to set the items be backed up, then click **OK**.

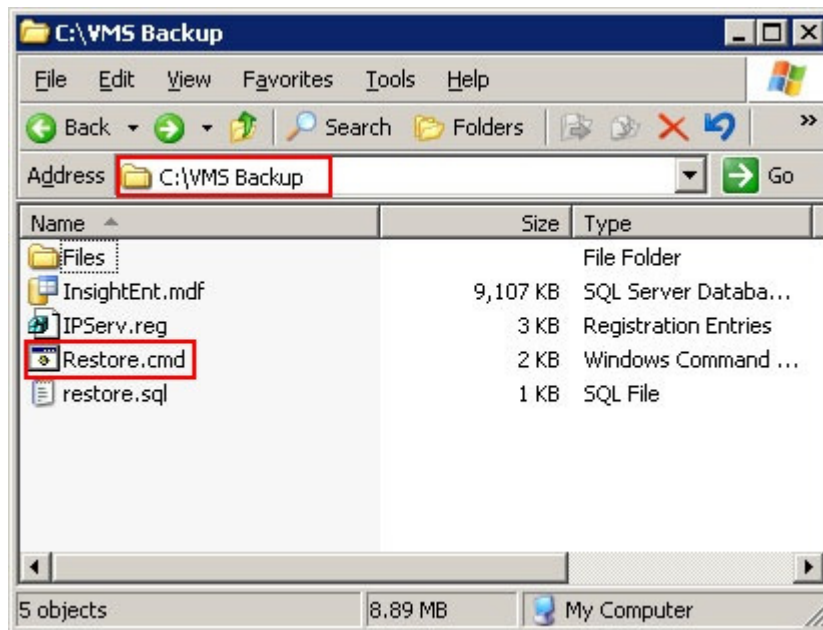


Click the **Start Backup** button to begin the backup process.

The results of the backup will be displayed in a pop up window.



Click **OK** and browse to the defined backup folder to view the contents of the backup.



Double click the **Restore.cmd** file to begin the restoration process from the backup data and files.

**This is done only when the user actually wishes to restore a backup.**

**This is not a part of the normal backup process.**

**NOTE : The IP Server does NOT need to be stopped during the backup process, but it is recommended to stop the IP Server during a restore.**