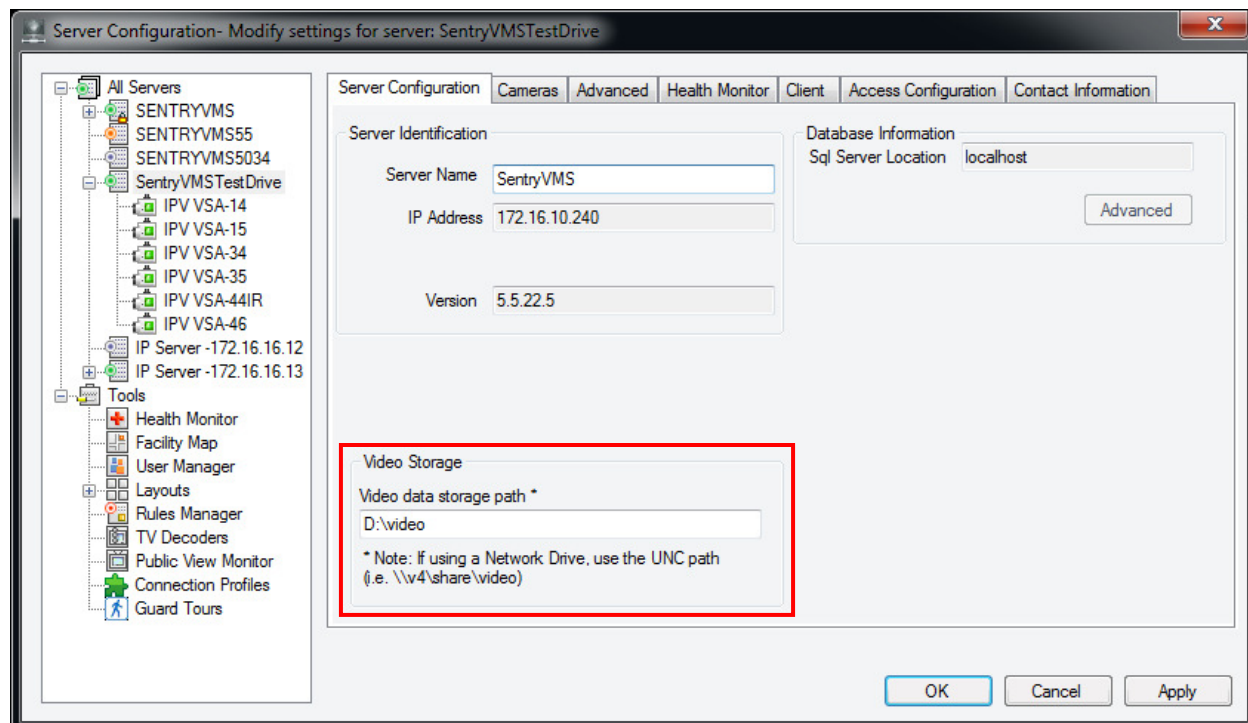


## SentryVMS Knowledge Base - Video Storage Path

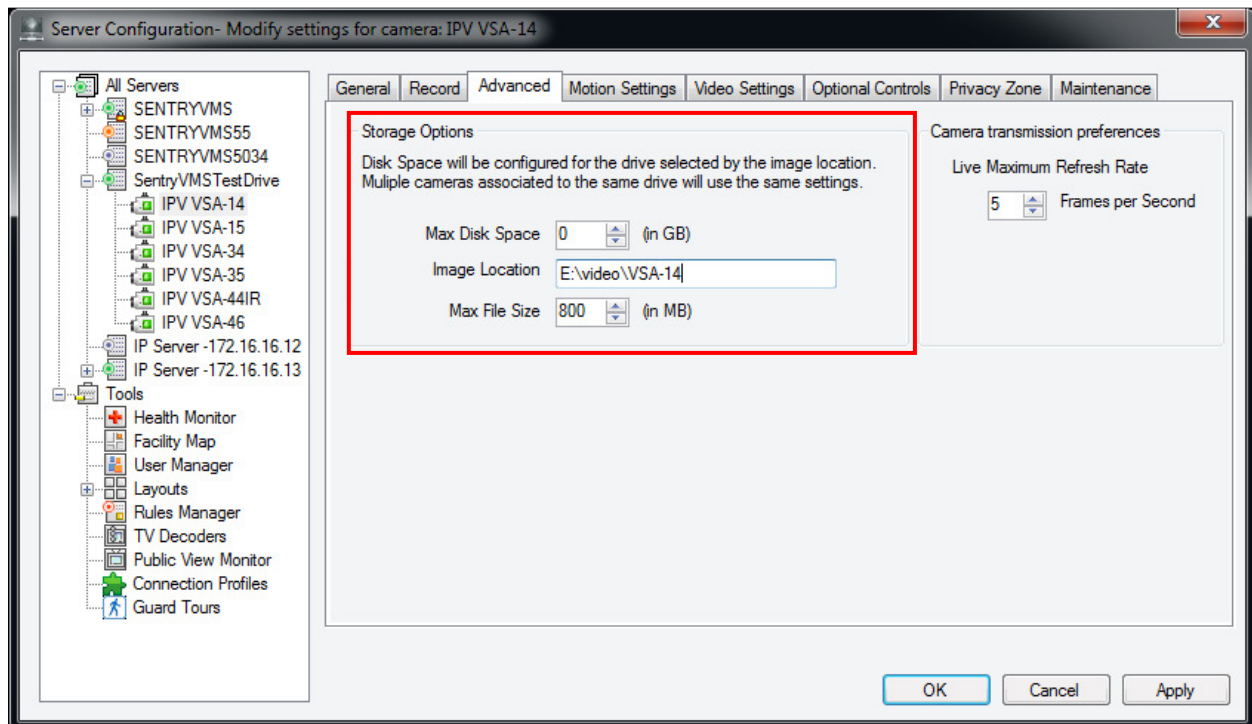
**Problem:** Recorded video cannot be played back from selected time/date, or video files become corrupted.

### **Resolution:**

When the **Image Location** is specified at the server level (Server Properties/Global for all Cameras), the system will create folders for each camera making a hierarchy that appears like D:\Video\192.168.1.2-8374837\12.07.09\12h32m31s.avi.



When you specify an **Image Location** at the camera level (Camera properties) the software assumes that the specified camera is the only one storing into that folder. This causes the application to **not** create a camera specific folder before starting the “day” folders.



If you specified E:\video for the camera level image location the next folder would be E:\video\02.07.2014\..... and skips the camera specific folder entirely.

**When multiple cameras are recording to the same “day” folder they overwrite one another and corrupt one another.**

The proper setup is to specify a unique folder for each camera. Specify the path as **E:\Video\Camera1** instead of E:\Video, and then on the next camera use **E:\Video\Camera2**.