

**OVERVIEW:**

Using the Rules Manager, a Time Lapse Movie can be created, using administrator defined parameters.

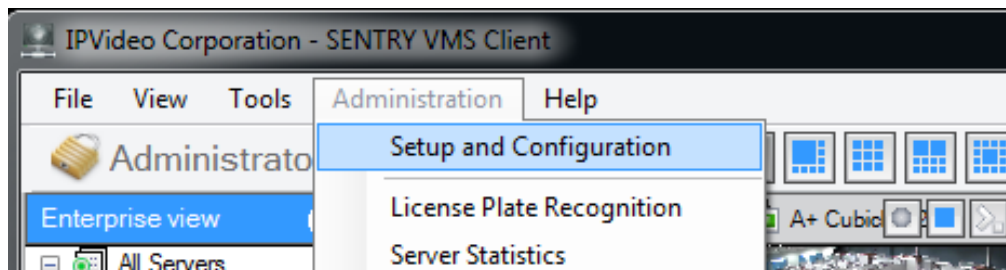
A separate "TimeLapse" folder will be created within the camera's archive folder. Please note, there are no settings for specifying how much space is to be allocated to the time lapse movie, and by default, the camera's specified storage folder is used.

Based on the fact that this rule is storing a unique file, separate storage space needs to be allocated for the movie. Please calculate how much space will be necessary to capture the entire length of the event, and make sure enough space remains on the specified drive.

The space that was originally allocated for the normal storage operation will not be affected.

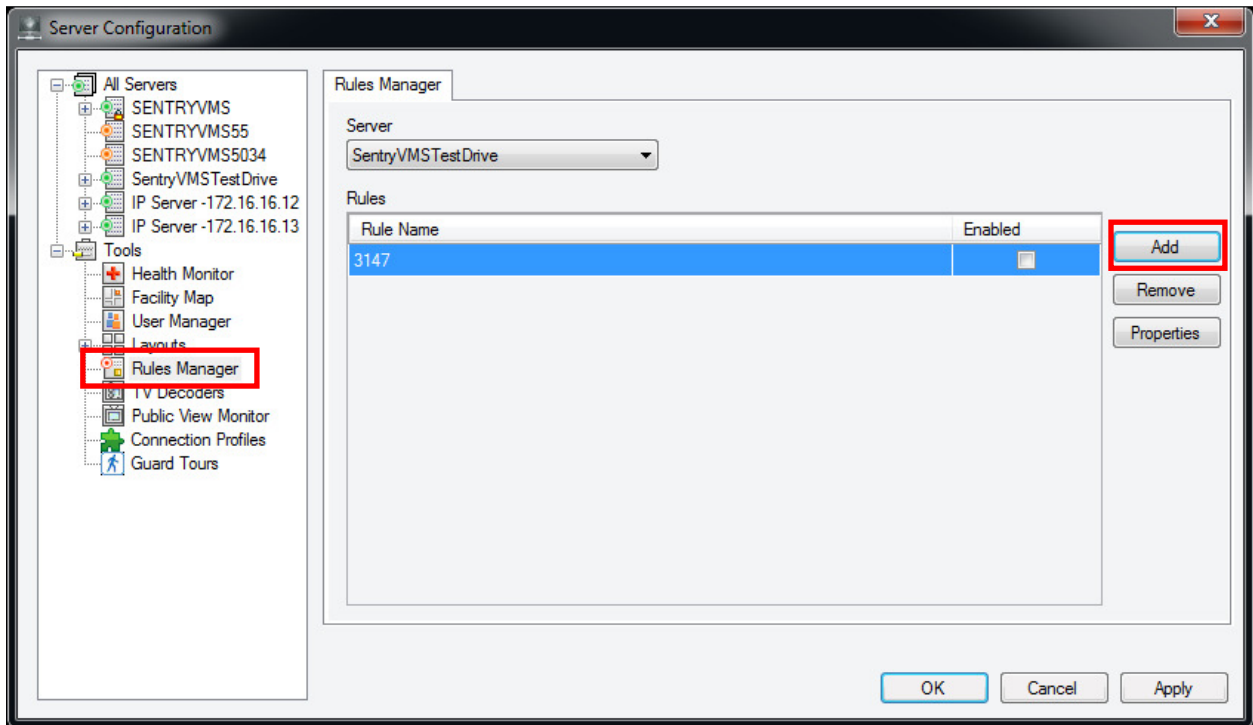
**PROCESS:**

Open Monitor Station. Click on **Administration**, and select **Setup and Configuration**.



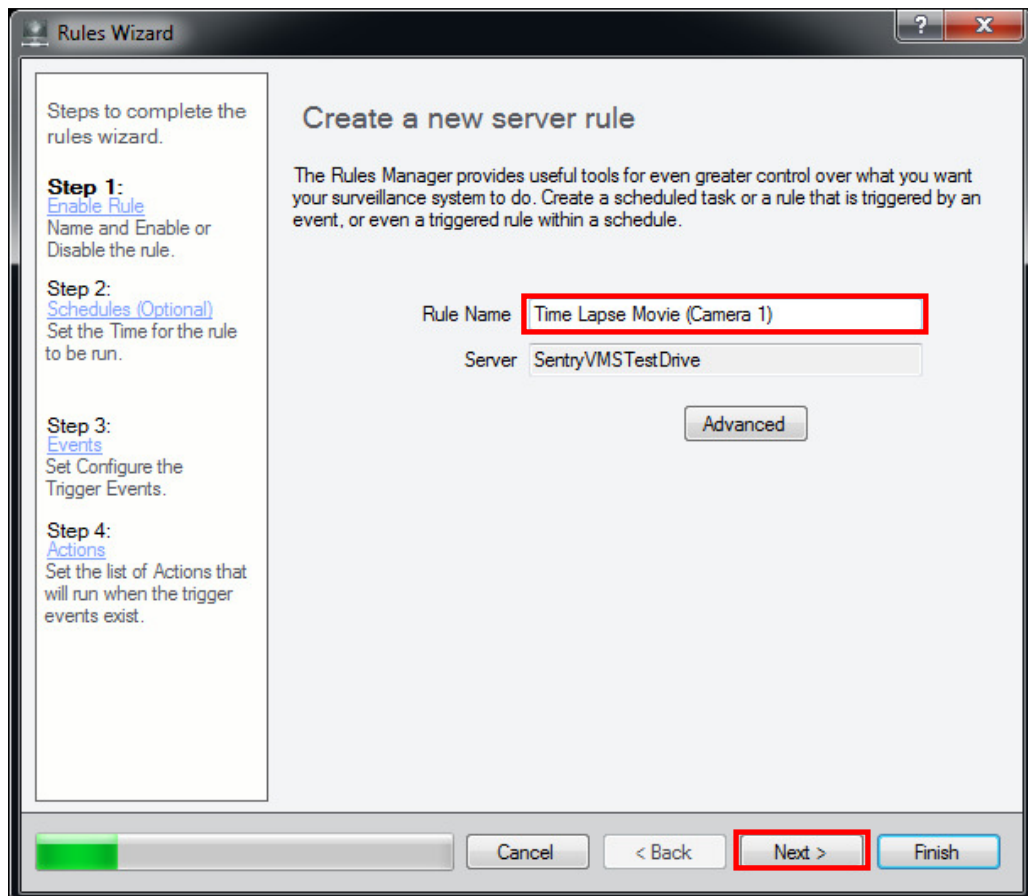
On the left tree of the **Setup and Configuration** window, select **Rules Manager**.

Click on the **Add** button on the right to launch the **Rules Wizard**.



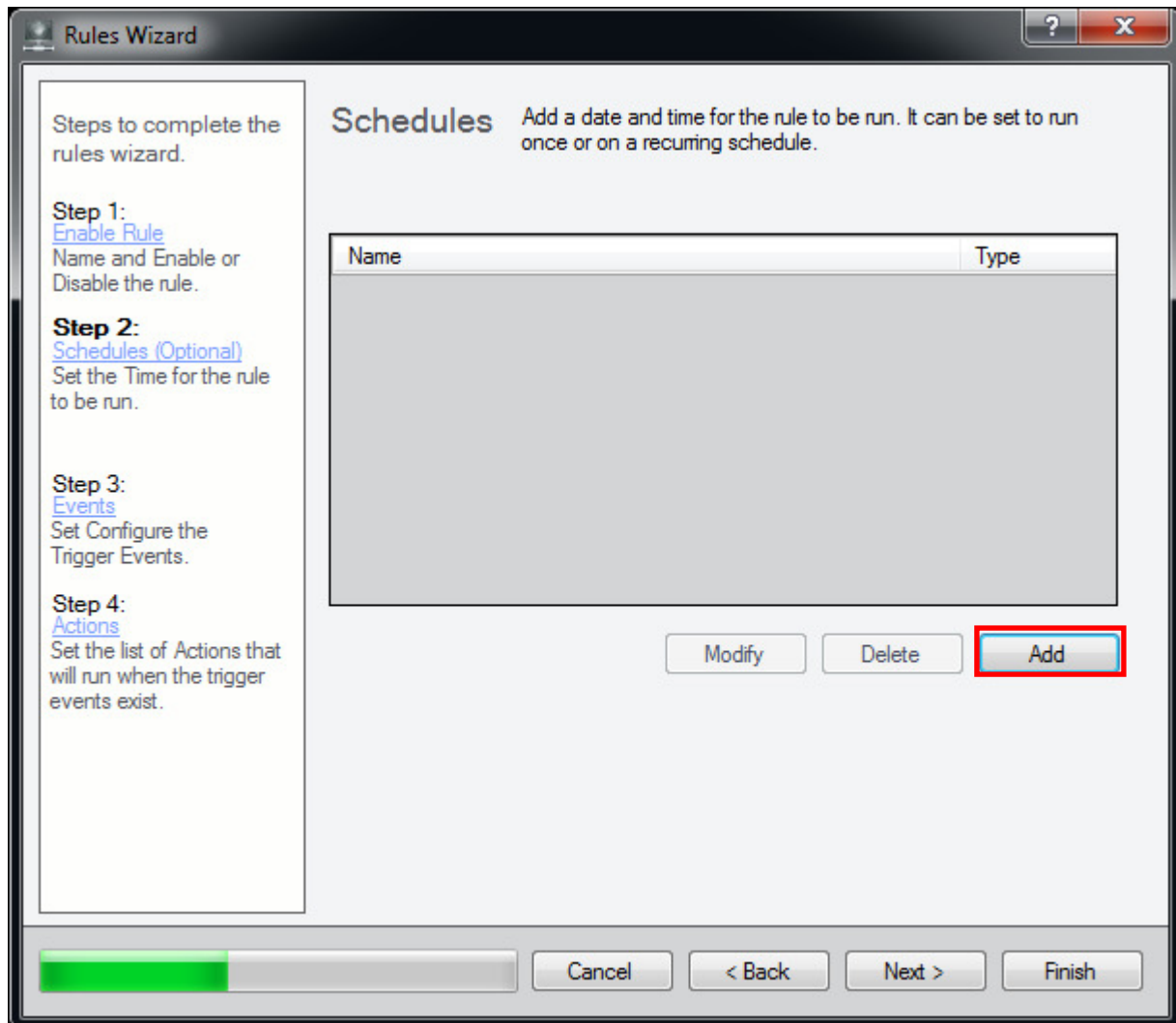
### Step 1 : Enable Rule

Enter a **Rule Name**, then click **Next**.



## Step 2 : Schedule

Click the **Add** button to setup the Schedule.



Rules Wizard - Schedule

General Information

Name: Time Lapse Schedule

Type: One Time

Scheduled Time

Start: 2/ 5/2014 10:00:00 AM

End: 2/ 5/2014 11:00:00 AM

OK Cancel

Enter a **Name** for the Schedule.

Select **One Time** from the **Type** drop down Menu.

Select a **Start** and **End** time frame for the Project.

### Step 3 : Events

Steps to complete the rules wizard.

**Step 1:**  
[Enable Rule](#)  
Name and Enable or Disable the rule.

**Step 2:**  
[Schedules \(Optional\)](#)  
Set the Time for the rule to be run.

**Step 3:**  
[Events](#)  
Set Configure the Trigger Events.

**Step 4:**  
[Actions](#)  
Set the list of Actions that will run when the trigger events exist.

## Events

Rules can be run based on a triggered event. For example, it can be based on motion that is detected on certain cameras, when a Button (located on the icon toolbar) is pressed, or both.

Available Event Types

Type	Description
Access Control Event	Trigger off of an Access Control Entry or Alarm
Alert Button	An alert button appears in the navigation tree
Analytics	Trigger off of a supported Camera's Analytics
Digital Input	External input device (i.e Alarm)
License Plates	Trigger when a License Plate is found

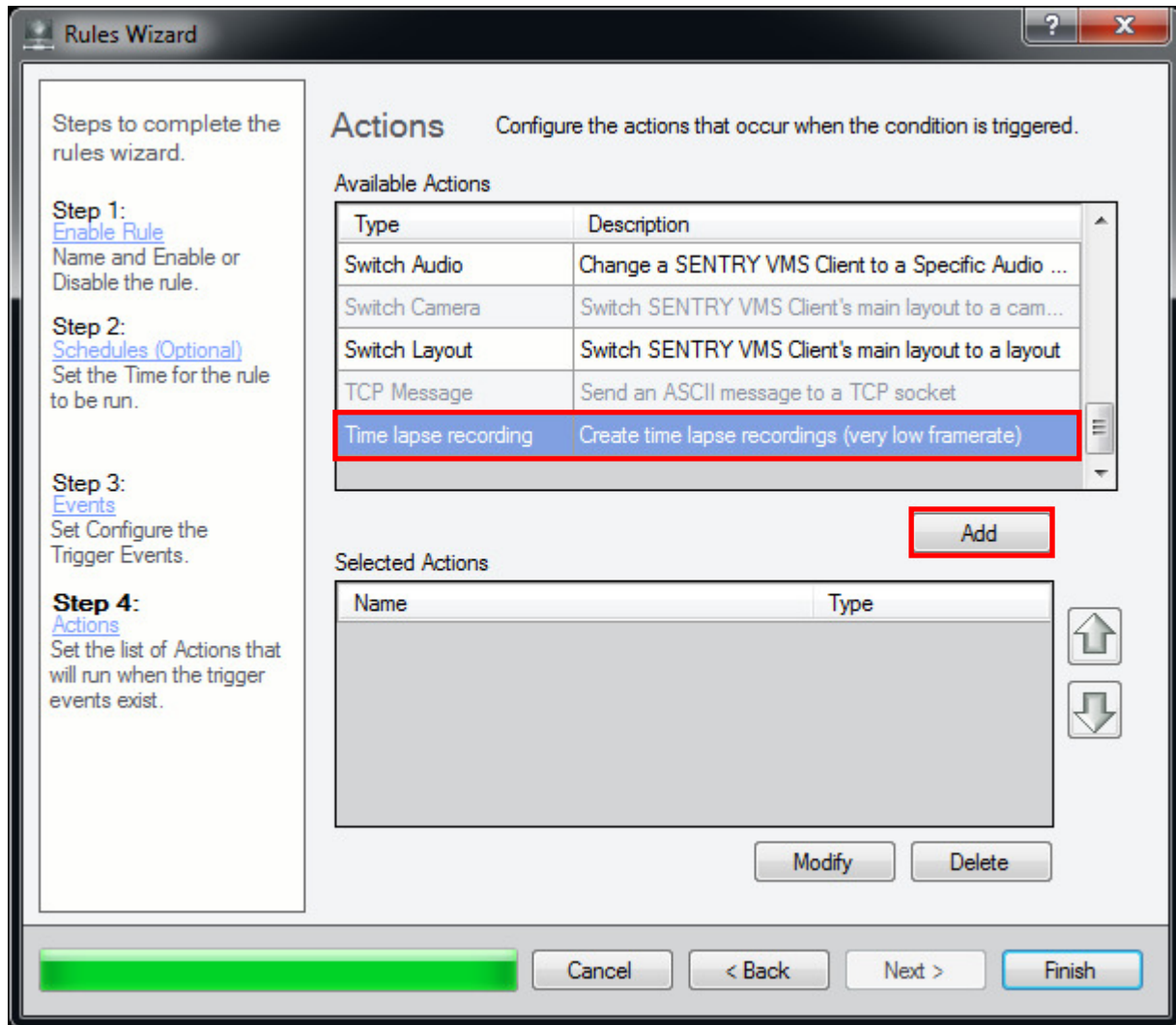
Logic for multiple event conditions:  AND (All events)  OR (Any event)

Event Name	Type
------------	------

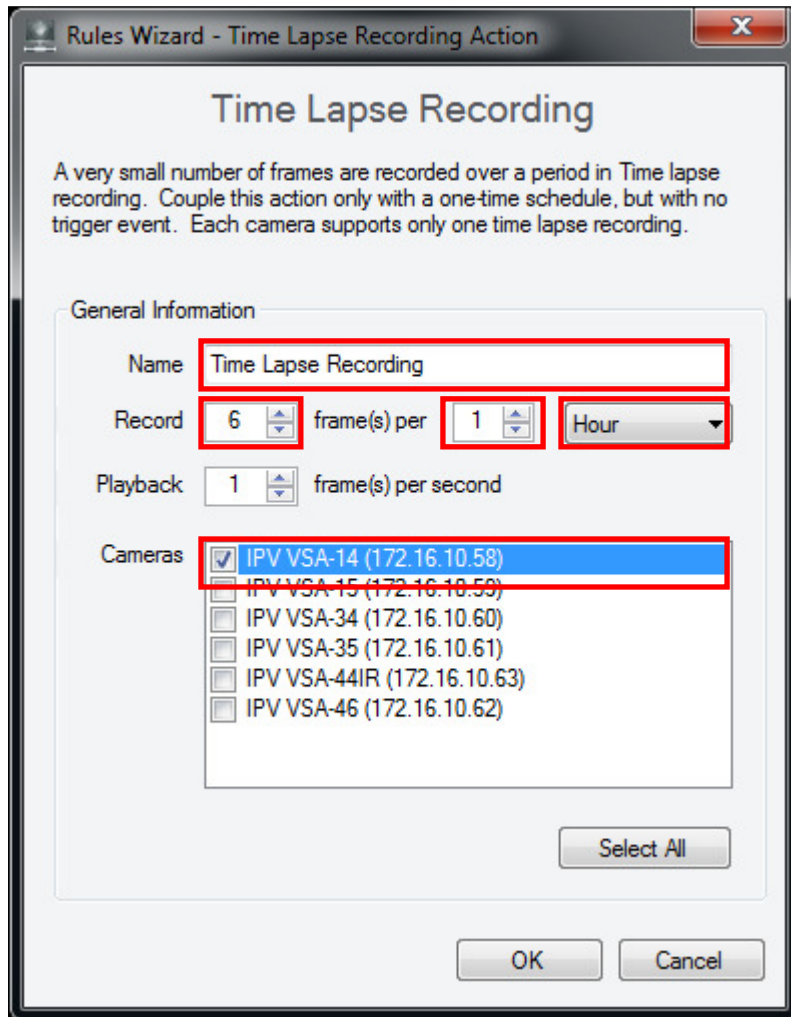
***An Event is not needed to create a Time Lapse Movie.***

Click **Next** to proceed with the Rules Wizard.

## Step 4 : Actions



Select **Time Lapse Recording** from the Available Actions list, then click **Add**.



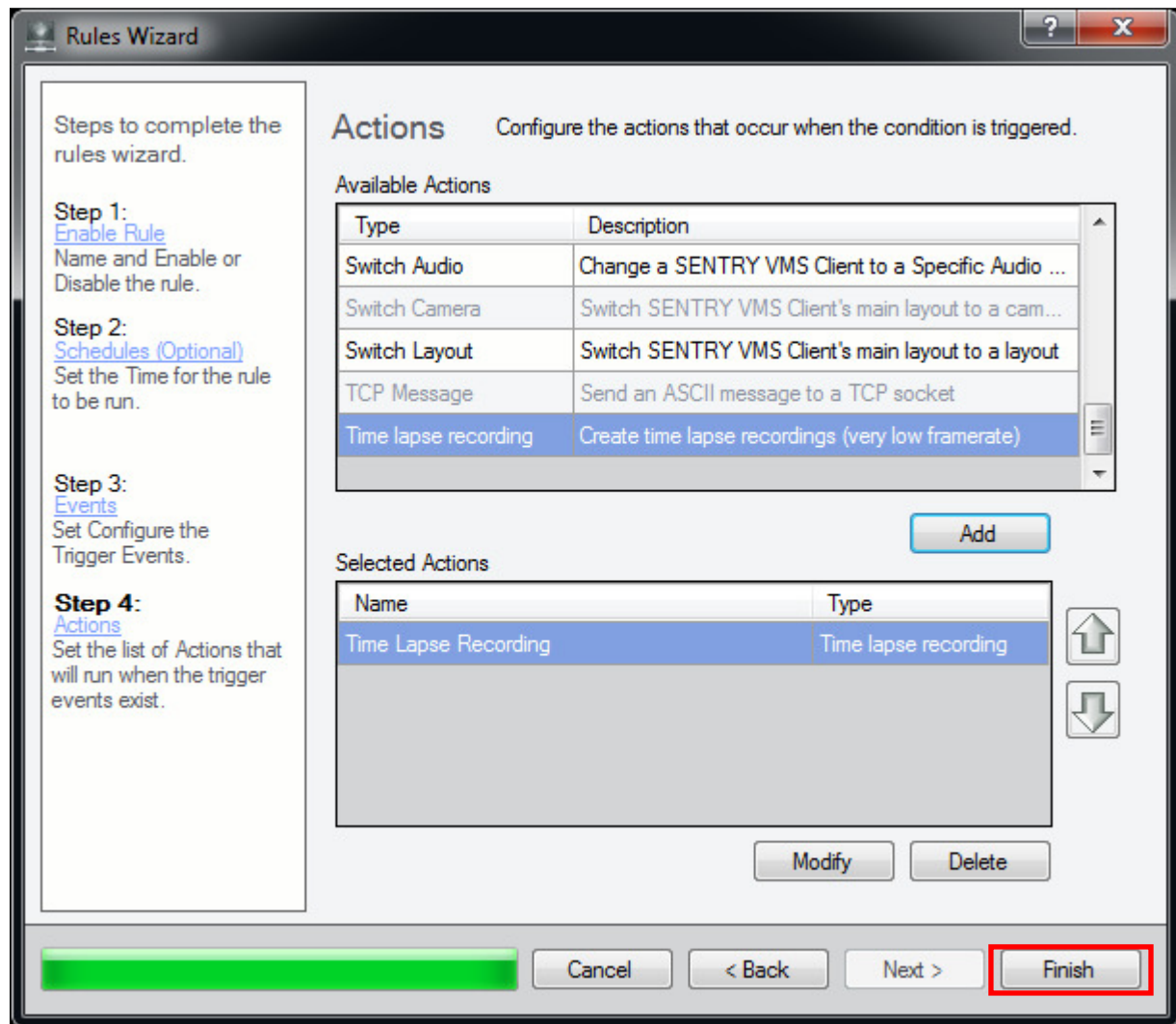
Enter a **Name** for the Action.

Set the **Record** Rate.

Set the **Playback** Rate. This determines the playback speed of the compiled movie.

Select the Camera or **Cameras** you would like to create Time Lapse Movies for.

Click **OK** to complete the Action Setup.



Click **Finish** to enable the Time Lapse Rule.