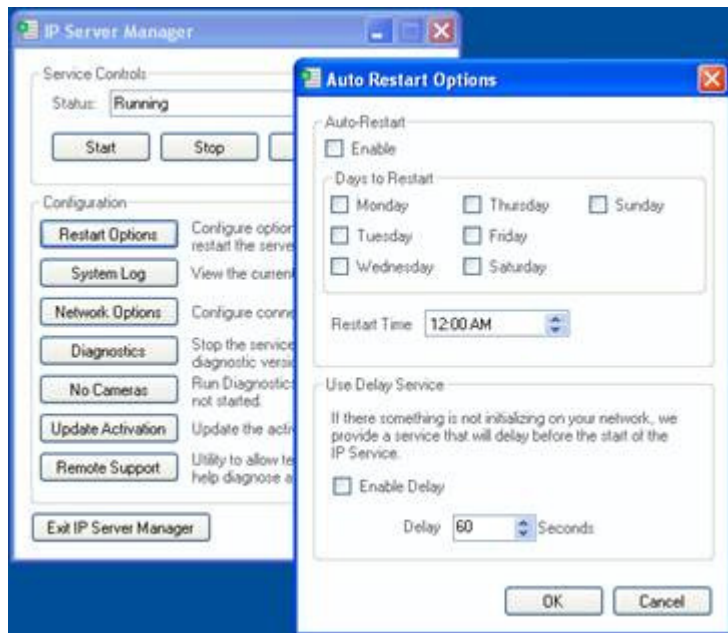


How Do I Configure Auto Restart for My IP Server?



Solution

Open "IP Server Manger"

- a. Right Click the Server Manager icon in the system tray
- b. Select Server Configuration
- c. Click Restart Options. This will open the Auto Restart Options configuration window.

From here you can enable a scheduled restart of the IP Enterprise service.

You can also configure a delay for the IP Enterprise service. This is useful for when rebooting the system and the IP Enterprise service starts before the Microsoft SQL service – we recommend not going below 60 seconds on this option.