



# CASE EXPLORER

- INSTALLATION GUIDE

Doc. 20161104

## Table Of Contents

Case Explorer IIS Application Installation.....	3
Setting up the C3F2 Server for FTP Video Upload.....	5
Create User Account .....	5
Create Video Export folder for FTP and set permissions. ....	7
Add the FTP Service to IIS on the C3fusion server. ....	11
Add FTP Server Website .....	14

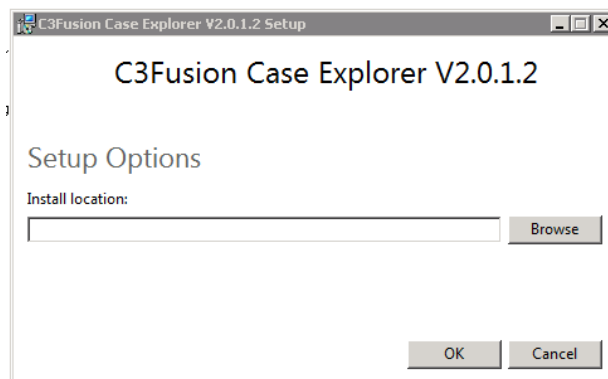
### Case Explorer IIS Application Installation

To install and utilize the C3fusion Case Explorer IIS App, you must run the executable file (*CaseExplorerSetupBundle.exe*), which can be obtained from IPVideo.

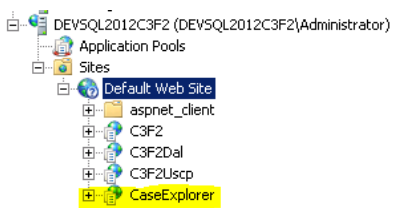
The Case Explorer is designed to be installed on any server running Microsoft IIS but will most often be installed alongside the C3fusion Administrative Website on the Master Server. To install the site, copy the executable to the IIS host machine and run it on that host:



By default the site will be installed: [C:\Program Files\IpVideo\C3Fusion\CaseExplorerWebSite](#). However, the user can select a different install location under the *Setup Options*, as shown here:



This directory will contain **all** files required to run the Case Explorer site. Also, the Case Explorer site will be automatically registered with IIS as shown here:



The site can then be accessed from the following URL: [http://\[iishost\]/CaseExplorer](http://[iishost]/CaseExplorer)

#### Notes:

1. Installation assumes that the MSSQL Case Database resides on the same host as the IIS host. If this is not the case, it can be changed in the Web.config file to point to a different database server:

*(C:\Program Files\IPVideo\C3Fusion\CaseExplorerWebSite\Web.config)*

There are four (4) places in the file that assume localhost:

```
<connectionStrings>
  <add name="DefaultConnection" providerName="System.Data.SqlClient"
connectionString="Data Source=localhost\SQLEXPRESS;Initial Catalog=Orion;User
ID=sa;Password=c3fusionsa"/>
</connectionStrings>
<appSettings>
  <!-- set the locale for localization here-->
  <add key="locale" value="en"/>
  <add key="webpages:Version" value="3.0.0.0"/>
  <add key="webpages:Enabled" value="false"/>
  <add key="ClientValidationEnabled" value="true"/>
  <add key="UnobtrusiveJavaScriptEnabled" value="true"/>
  <add key="OrionDalPath" value="http://localhost/c3f2dal/odata"/>
  <add key="OrionUscpPath" value="http://localhost/c3f2uscpsvc/uscpsvc.svc"/>
  <add key="OrionAdminPath" value="http://localhost/c3f2"/>
  <add key="ReturnMessageIp" value="10.1.6.238"/>
  <add key="ReturnMessagePort" value="8889"/>
</appSettings>
```

*Note: The values of the last 4 keys are very similar to those of all other C3fusion client installations and the same functional descriptions apply. In particular, the ReturnMessageIP must be that of the machine where Case Explorer IIS is running, but must be entered in numeric form.*

2. The database User ID and Password are hardcoded and may need to be changed to reflect the correct credentials required to connect to the database:

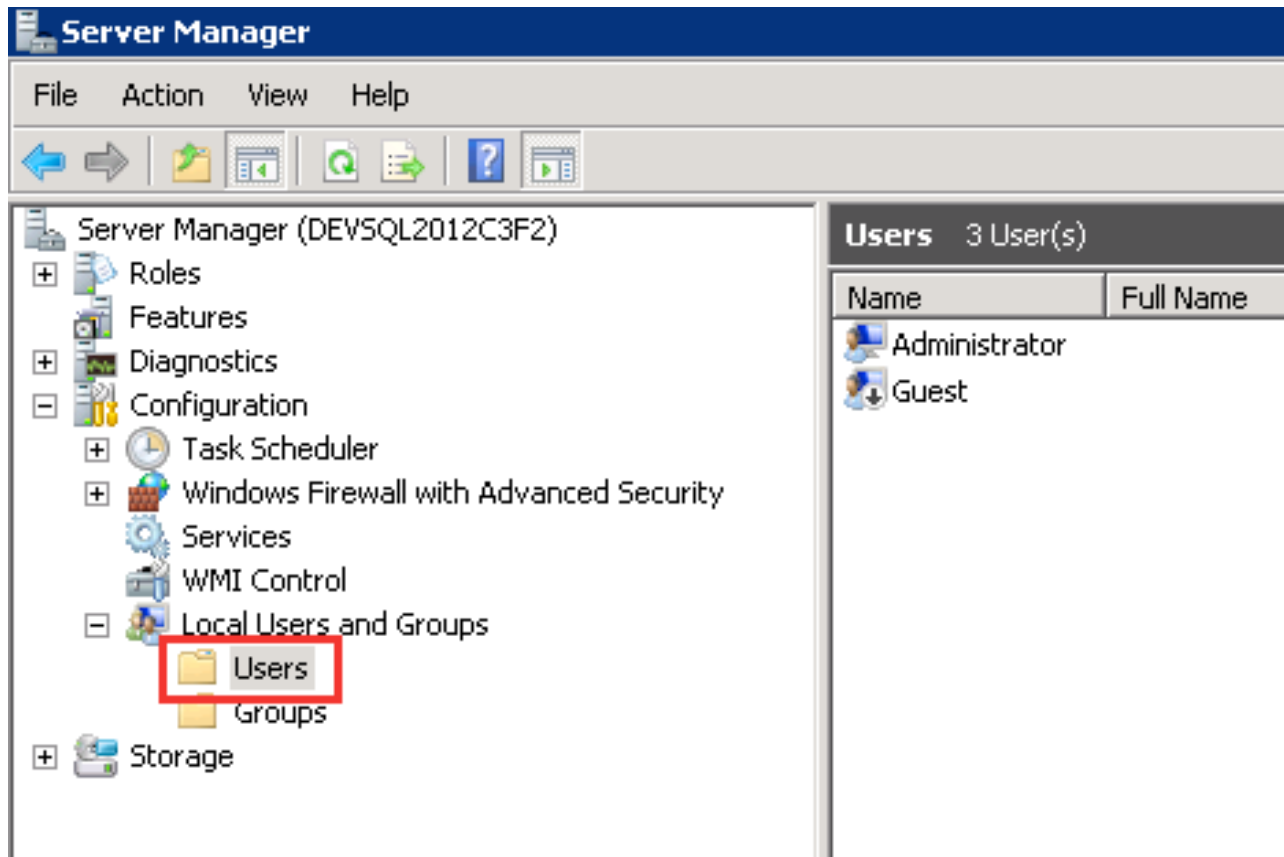
```
<connectionStrings>  
  <add name="DefaultConnection" providerName="System.Data.SqlClient"  
  connectionString="Data Source=localhost\SQLEXPRESS;Initial Catalog=Orion;User  
  ID=sa;Password=c3fusionsa"/>  
</connectionStrings>
```

### Setting up the C3F2 Server for FTP Video Upload

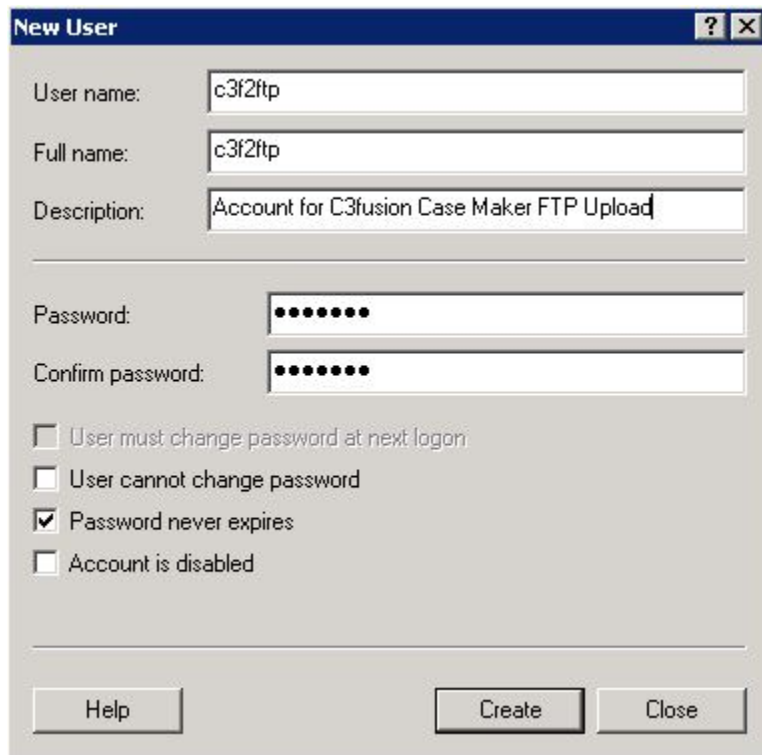
The **C3F2 client** establishes an FTP session to upload video clips from CaseMaker. It does NOT use an Anonymous FTP session. Instead, it uses an account called **c2f3ftp**. This account must be known to the **C3F2 server** at either the local or domain level. At this time the client (build .250) assumes the **c3f2ftp** account has the password '**c3f2ftp**'.

### Create User Account

1. Open *Server Manager* and expand *Local Users and Groups*, and select *Users*. Right Click on *Users* and select *New User*.



2. This action opens the New User dialog shown below



**New User** [?] [X]

User name: c3f2ftp

Full name: c3f2ftp

Description: Account for C3fusion Case Maker FTP Upload

Password: [Masked]

Confirm password: [Masked]

User must change password at next login

User cannot change password

Password never expires

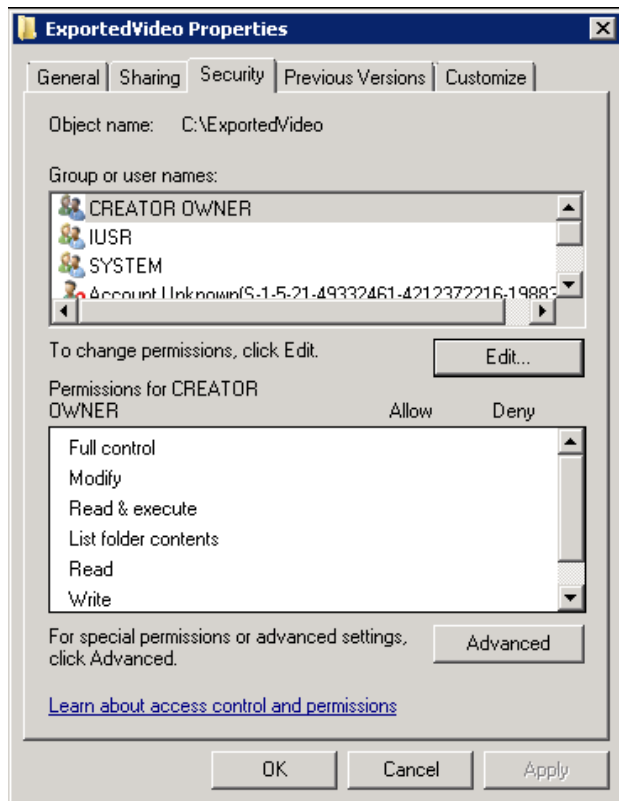
Account is disabled

Help Create Close

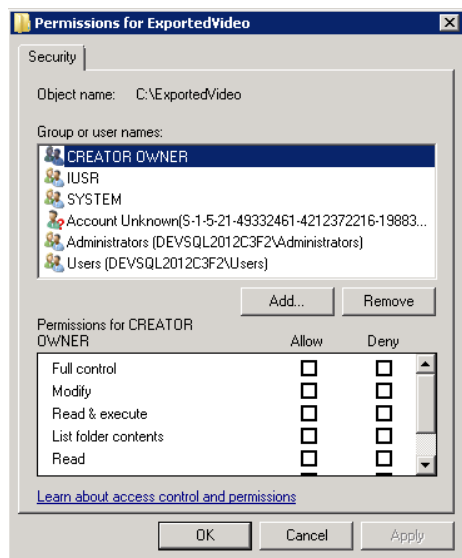
3. Enter “*c3f2ftp*” for the Username and Password.
4. Uncheck the “*User must change password at next login*” checkbox and check the “*Password Never Expires*” checkbox.
5. Click on *Create*.

#### **Create Video Export folder for FTP and set permissions.**

1. Create a new folder on a directory that has ample space to store video clips.
2. Right click on the folder and select *Properties* from the drop down menu.

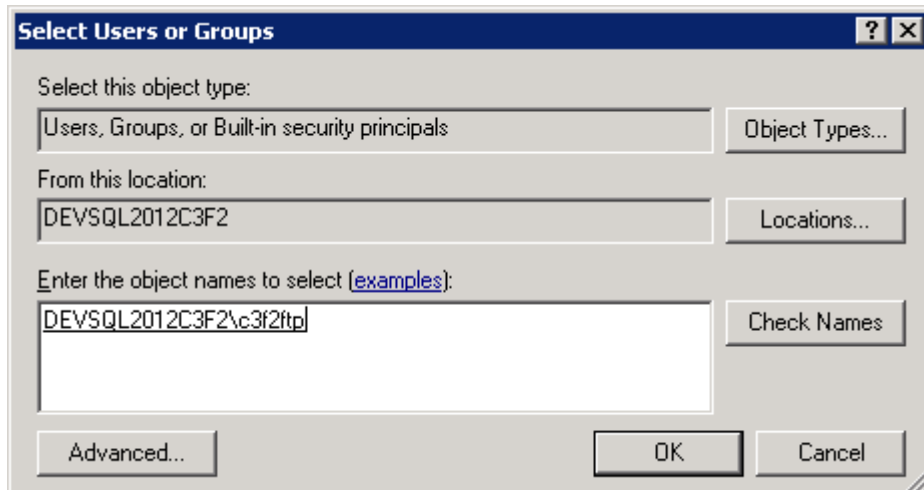


3. Click on the *Edit* button.

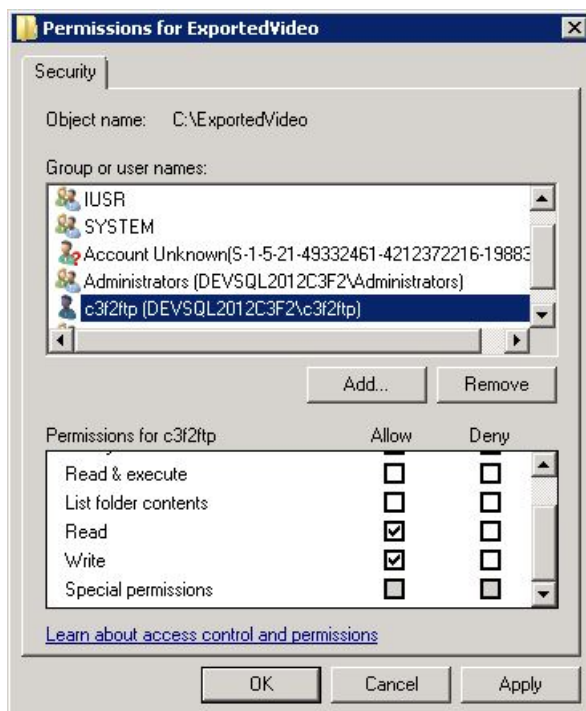


4. Click on the *Add..* button to add the *c3f2ftp* user to the folder permissions.

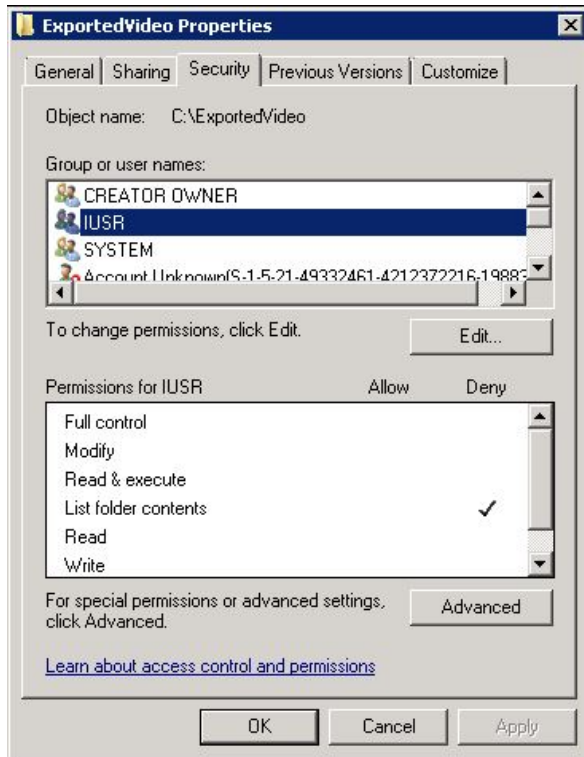




5. Type in the name "*c3f2ftp*" and click the Check Names button.

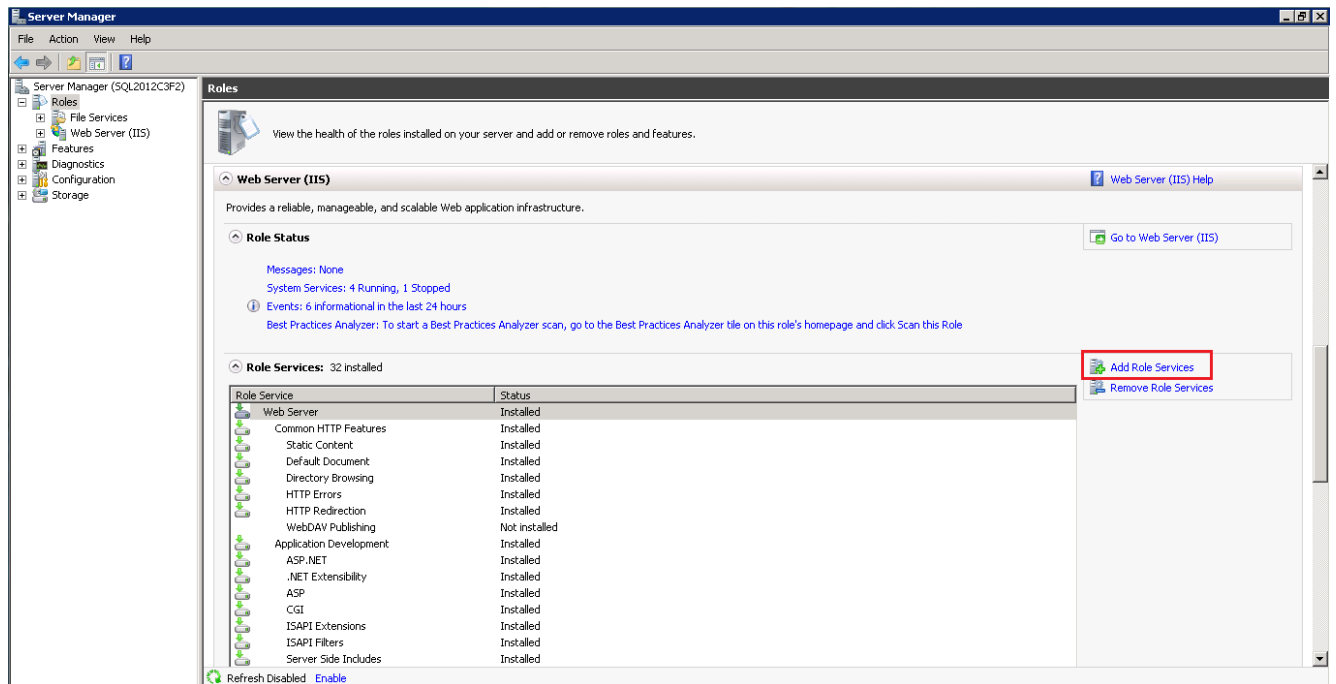


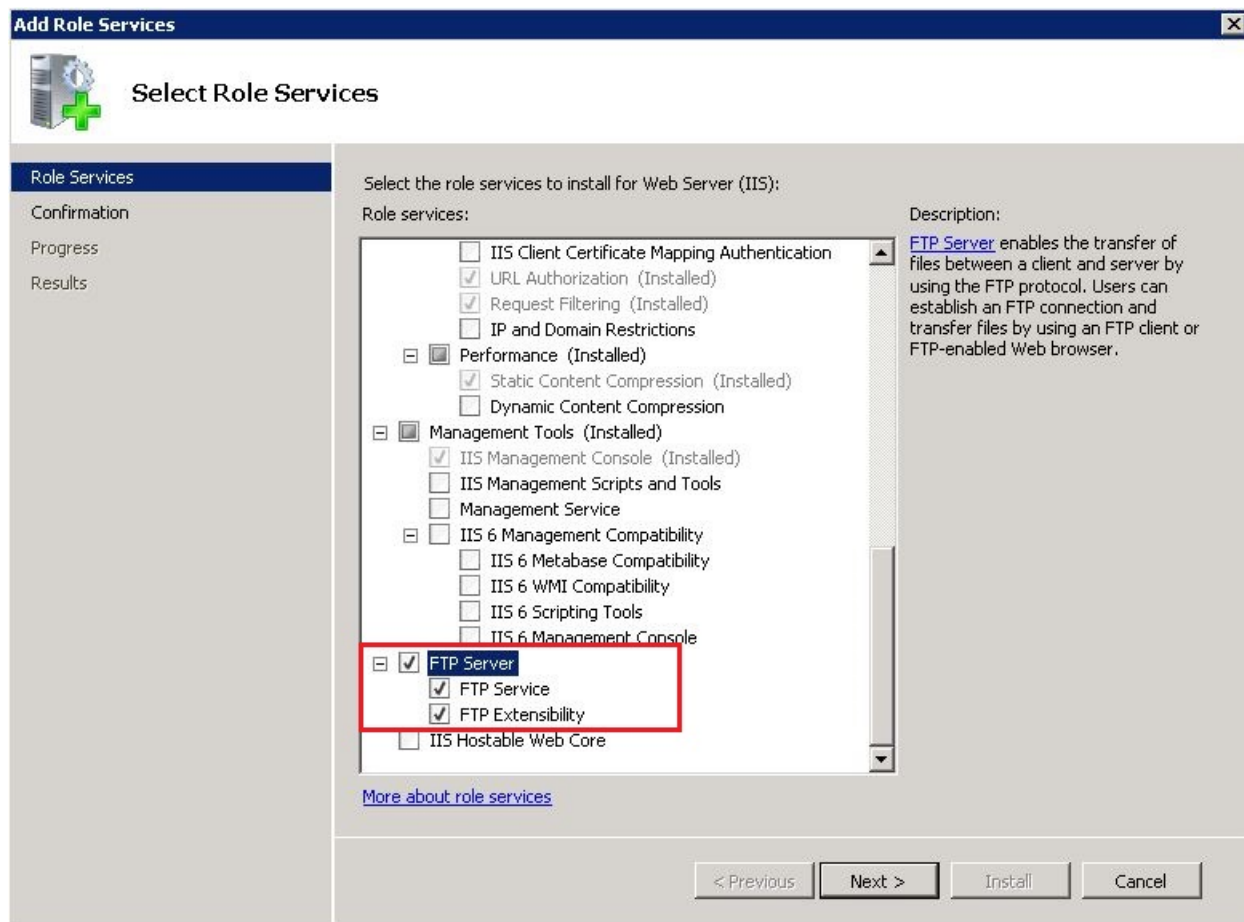
6. Click on the "*c3f2ftp*" user account and check the Read and Write checkboxes in the Allow column.
7. Deny IUSR the 'List folder contents' permission.



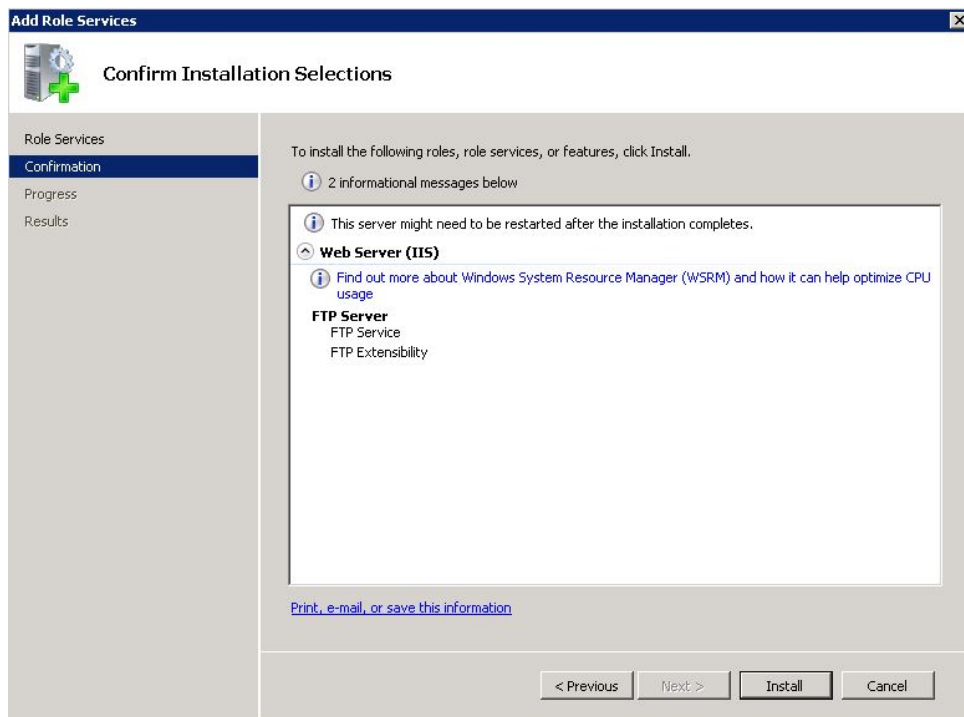
**Add the FTP Service to IIS on the C3fusion server.**

1. Open the *Server Manager* window.
2. Click on *Roles* and scroll down to Web Server (IIS)
3. The FTP Service is a component of Web Server (IIS) which will have already been installed so you will need to add FTP Service via Add Role Services.
4. Click on *Add Role Services*

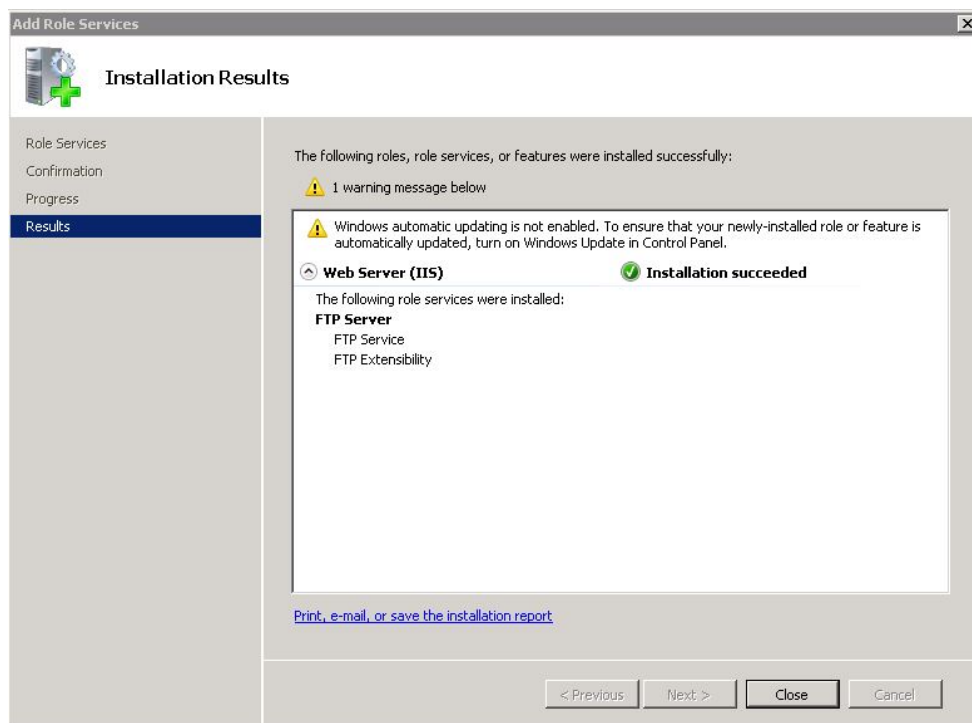




5. Check the **FTP Server** checkbox which will autocheck the FTP Service and FTP Extensibility checkboxes.



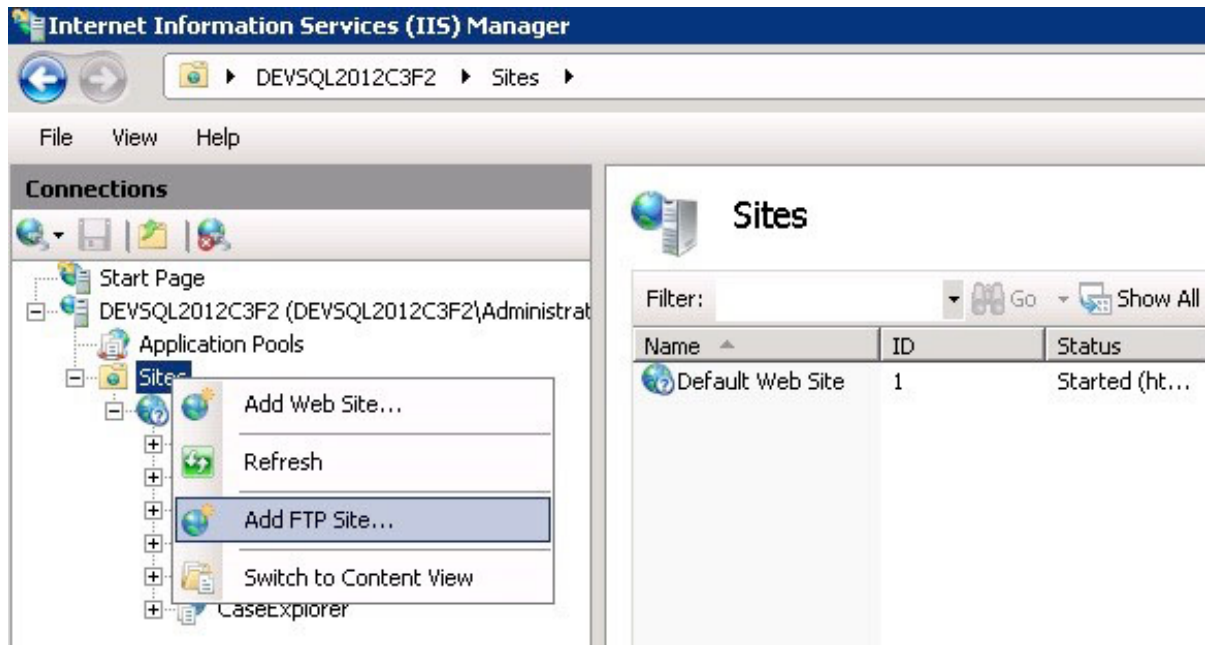
6. Click the *Install* button to begin the FTP Service installation.



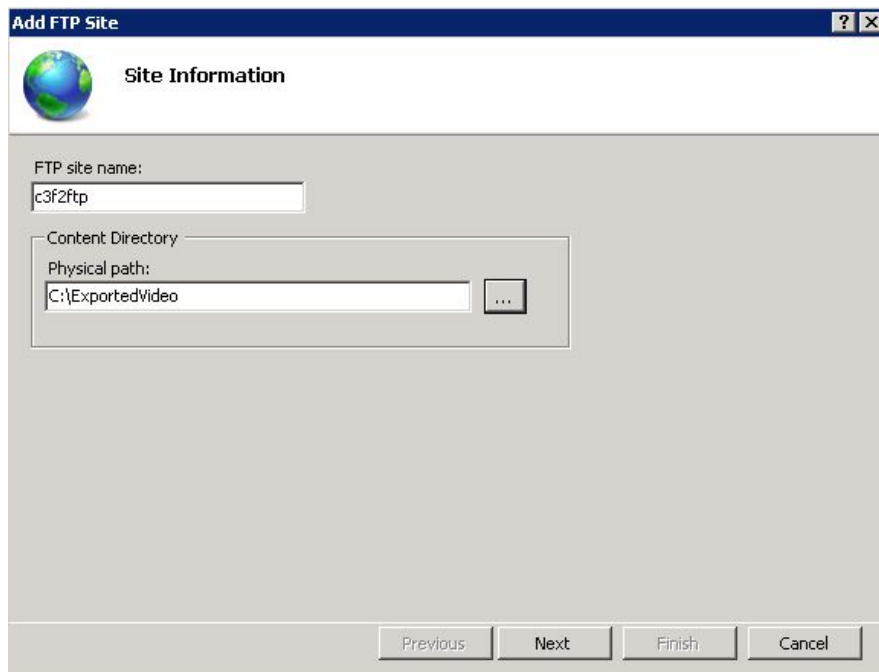
7. Once the install is complete, click the *Close* button to continue with the configuration.

## Add FTP Server Website

1. Open IIS Manager and right click on *Sites* and select *Add FTP Site...*

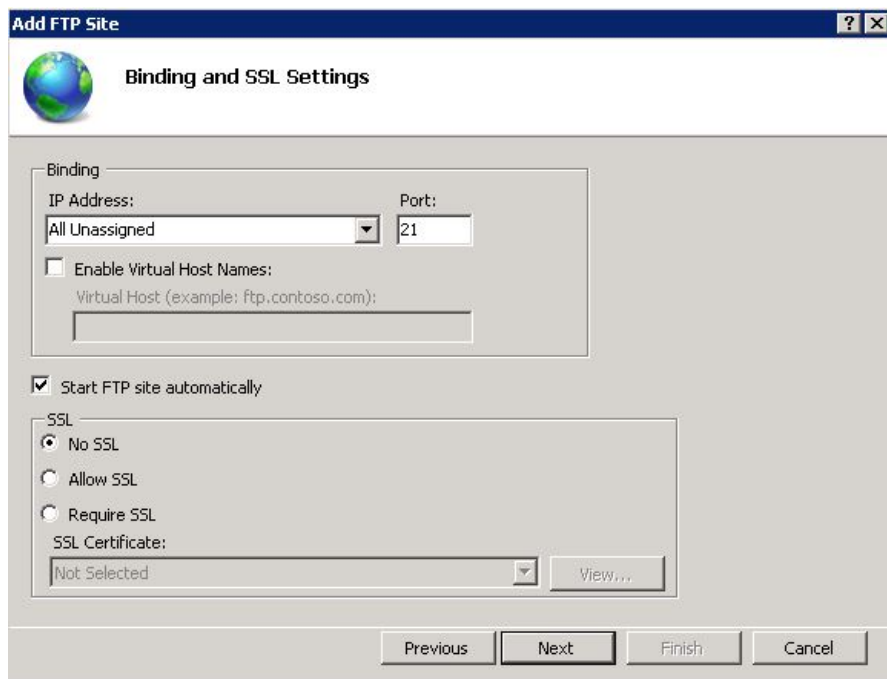


2. The Add FTP Site wizard form opens.

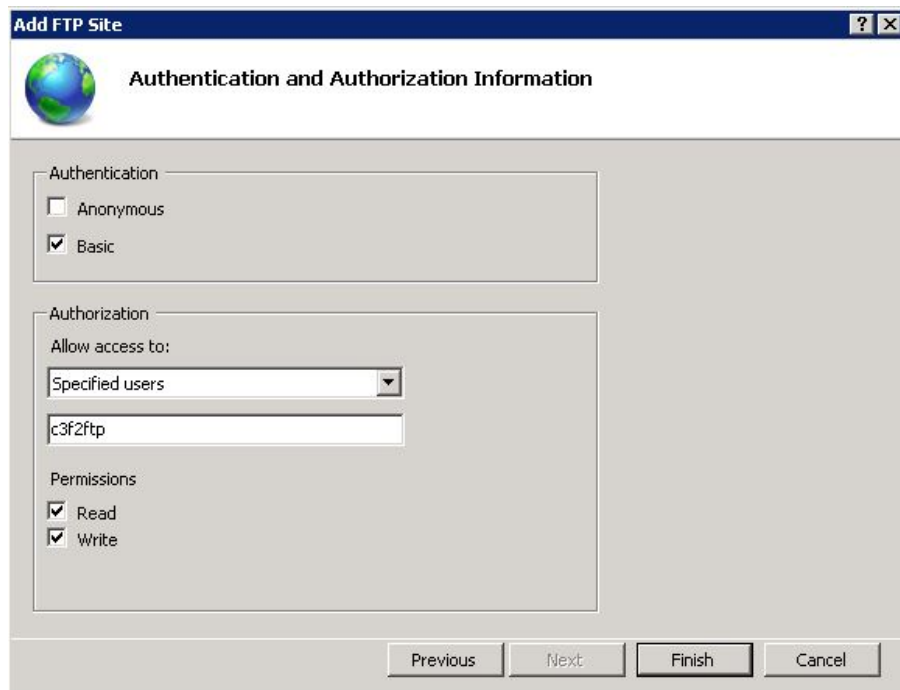


3. Enter the FTP Site Name and specify the folder that will be used to store exported video.

4. Click *Next*.



5. Select *No SSL* and click *Next*.



6. Check the *Basic* checkbox for Authentication.

7. Allow Access to Specified user and specify “*c3f2ftp*”
8. Check the *Read and Write* checkboxes for Permissions
9. Click *Finish* to add FTP Site

